

SIMONSWERK
TECTUS®

distributed in North America by :



1-800-362-1484
www.BridgeportWorldwide.com

TE 626 3D A8

Manufactured of solid stainless steel for flush high performance commercial doors with claddings up to 8 mm (0.315")

hinge

Technical Details

load capacity	661 lbs
overall length	9.449 "
width (door)	1.260/1.457 "
width (frame)	1.260/1.457 "
router bit Ø	3/4 "
opening angle	180° degree

Descriptive Text

SIMONSWERK TECTUS TE 626 3D A8 hinge manufactured of solid stainless steel (304 series) for doors with claddings of up to 8 mm (0.315"). Completely concealed for flush doors with wood, steel or aluminum frames. UL listed for 180 minute rated fire doors, with user-friendly 3-way adjustment, load capacity up to 300 kg (661 lbs.), opening angle up to 180°, overall length 240 mm (9.449"), non-handed, maintenance-free slide bearings, three-dimensionally adjustable: side +/- 3,0 mm (0.118"), height +/- 3,0 mm (0.118"), compression +/- 1,0 mm (0.039"). Finish...

Note

The load capacity mentioned above refers to the use of 2 hinges per door leaf with a height/width ratio of 2:1.

For a minimum door panel thickness of 40 mm (1-5/8" plus cladding).
For fire rated doors: Check with door manufacturer regarding the usage of additional required intumescent material.
Cover plates for doors without without cladding are available upon request.
Square-corner cover plates are available upon request.

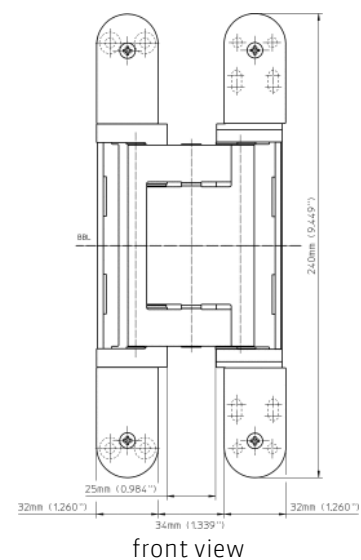
Product Features

Solid non magnetic stainless steel (304 series)
Completely concealed hinge system
For wood, steel or aluminum door panels and frames
Easily adjustable in three dimensions (side +/- 3.0 mm (0.118"), height +/- 3.0 mm (0.118"), compression +/- 1.0 mm (0.039"))
Maintenance-free slide bearings

Functional Areas

fire resistance, smoke resistance, soundproof und forced entry resistance

Quality Marks



SIMONSWERK

TECTUS®

TE 626 3D A8

Manufactured of solid stainless steel for flush high performance commercial doors with claddings up to 8 mm (0.315")

hinge

Combination

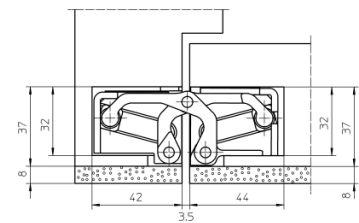
accessories cover plate set TECTUS
A8 radius

Installation Tools

universal milling frame	
template 5 250659 5	24 mm router bit / 30 mm collar ring (step 1)
template 5 250688 5	24 mm router bit / 30 mm collar ring (step 3 (without cladding))
template 5 250689 5	24 mm router bit / 30 mm collar ring (step 2)
template 5 250690 5	24 mm router bit / 30 mm collar ring (step 3)

Items (DIN Reference: non-handed)

Finish(es)	satin stainless steel
packing unit	pack of 2
Item Number	5 400675 0 04002



commercial wood frames