

SIMONSWERK INSTALLATION TOOLS

distributed in North America by :



1-800-362-1484
www.BridgeportWorldwide.com

universal milling frame

As well fitting installation aid for SIMONSWERK templates

application accessories

Scope of Supply

1 x universal frame
1 x clamping device

Fitting Instructions

1. Secure the clamping device to the routing frame using the clamp rods.
2. Roughly adjust the clamping device according to rabbet construction and fix in place with fastening screws.
3. Clamp routing frame to workpiece with clamping wheel.
4. Insert template and roughly adjust using the standard values given for rail and angle.
5. Carry out fine adjustment using spindles.

Note

Templates need to be ordered separately.

Installation Tools

TE 240 3D

TE 340 3D

TE 540 3D

TE 640 3D

TE 541 3D FVZ

TE 540 3D A8

TE 640 3D A8

TE 626 3D A8

TE 240 3D Energy

TE 340 3D Energy

TE 526 3D Energy

TE 527 3D Energy

TE 540 3D Energy

TE 640 3D Energy

TE 540 3D A8 Energy

TE 640 3D A8 Energy

TE 626 3D A8 Energy

Items (DIN Reference: non-handed)

Finish(es)

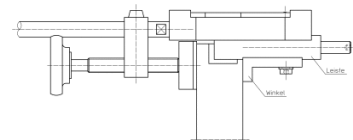
packing unit

Item Number

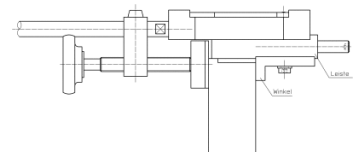
without

pack of 1

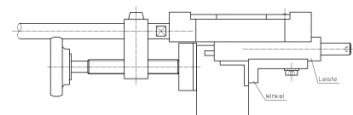
5 250930 0 00001



cross section 1



cross section 2



cross section 3

Universal Milling Frame



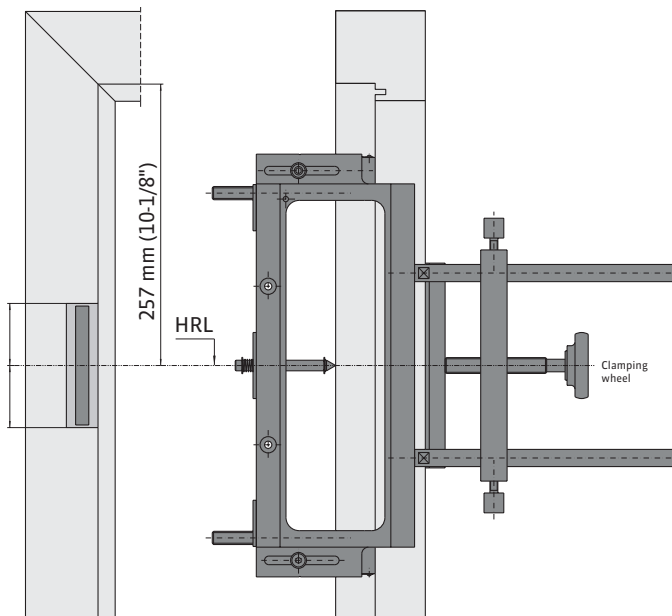
Universal milling frames are also available as serial milling jigs for serial production. The suitable routing templates must be ordered separately for the respective hinge model.

Hinge reference line (HRL):

The hinge reference line (HRL) always refers to the center of the hinge.

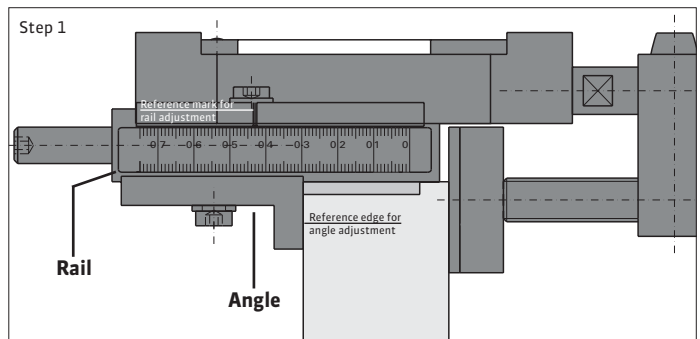
The upper hinge reference line (HRL) on the frame is positioned 257 mm (10-1/8") from the upper frame header. The upper door hinge reference line is positioned 254 mm (10") from the top of the door panel.

The lower door hinge reference line is positioned 254 mm (10") from the bottom of the door panel. The HRL on the frame is 254 mm (10") plus the desired margin between the door panel and the finished floor/threshold.



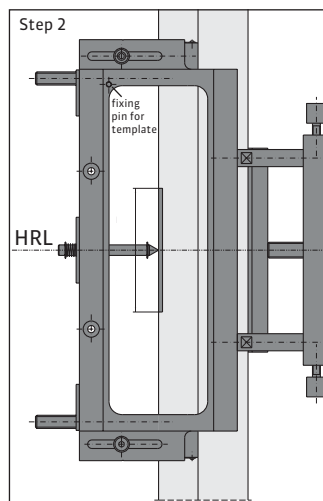
Note:
It is highly recommended to perform a test route to assure accurate settings.

Preparing the milling process

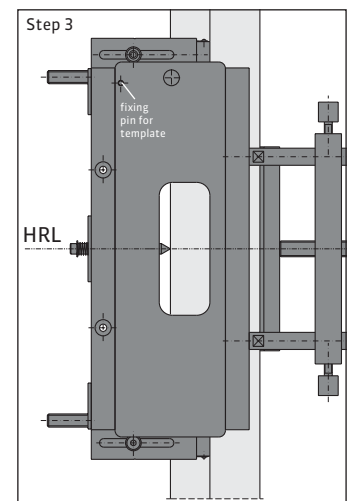


Adjust rail and angle according to the data on the routing template.

Clamp the milling frame onto the workpiece by tightening the clamping wheel.



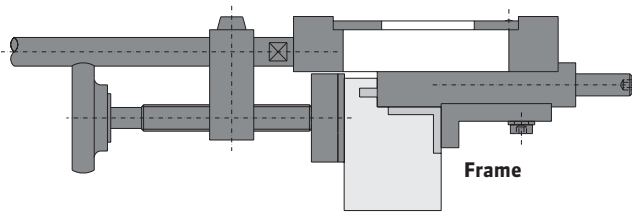
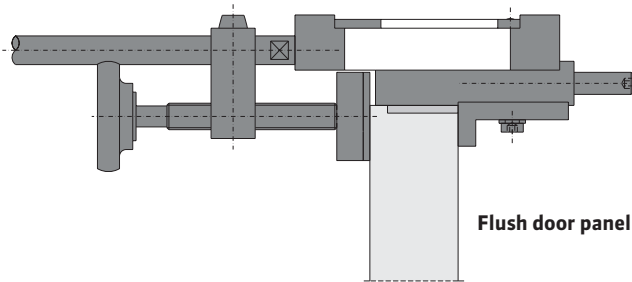
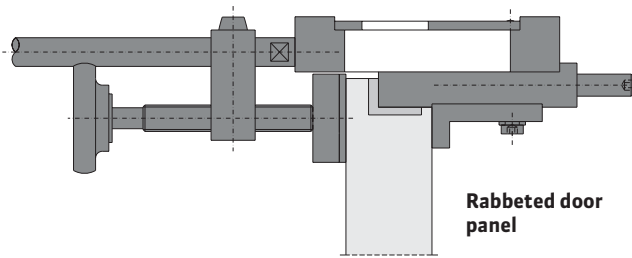
Mark the location of the HRL. Position the universal milling frame by using the HRL centering pin to the marked position.



Depending on the type of hinge, the suitable routing template must be selected. Insert the template and position it on the fixing pin.

Universal Milling Frame

Clamping situations, depending on the door panel / frame design.



Milling templates for Universal Milling frame depending on the hinge model.



Note: The templates must be ordered separately for the respective hinge models.

Serial milling jig



Use of the serial milling jig:

Depending on the desired positions of the hinge locations, the milling bodies must be positioned and fixed.

The end stops must be set individually.

The end stops are 3 mm (1/8") thick and can therefore be used as spacers.

Settings: see universal milling frame - step 1.