

SIMONSWERK TECTUS®

TE 626 3D A8 Energy

Manufactured of solid stainless steel with integrated and continuous energy transfer for flush high performance commercial doors with claddings up to 8 mm (0.315")

hinge

Technical Details

load capacity	661 lbs
overall length	9.449 "
width (door)	1.260/1.457 "
width (frame)	1.260/1.457 "
router bit Ø	3/4 "
opening angle	180° degree
no. of wires	16 No. of wires
wire cross section	0.006 "
max. voltage: 50 V (voltage source acc. SELV-DIN EN 61140)	
max. current	0,8 A

Descriptive Text

SIMONSWERK TECTUS TE 626 3D A8 Energy hinge manufactured of solid stainless steel (304 series) with integrated and continuous energy transfer for doors with claddings of up to 8 mm (0.315"). UL listed for 180 minute rated fire doors, with user-friendly 3-way adjustment, load capacity up to 300 kg (661 lbs.), opening angle up to 180°, overall length 240 mm (9.449"), non-handed, maintenance-free slide bearings, three-dimensionally adjustable: side +/- 3,0 mm (0.118"), height +/- 3,0 mm (0.118"), compression +/- 1,0 mm (0.039"). Finish...

Note

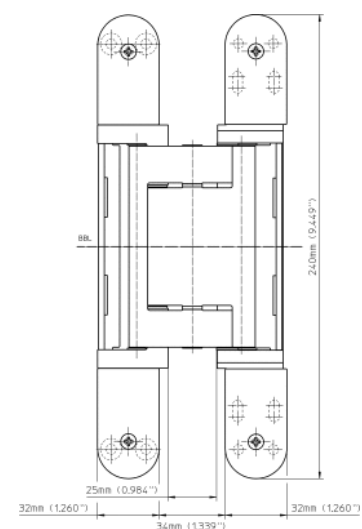
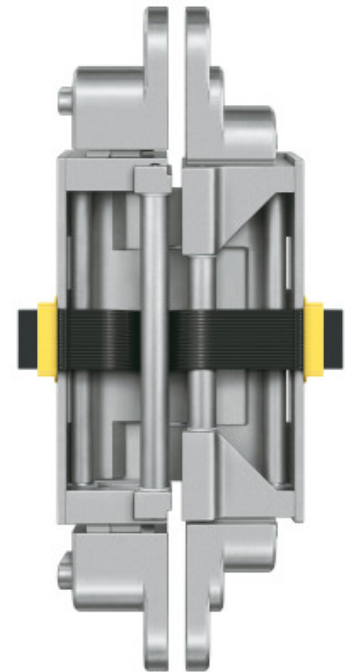
The load capacity mentioned above refers to the use of 2 hinges per door leaf with a height/width ratio of 2:1.

For a minimum door panel thickness of 40 mm (1-5/8" plus cladding).
For fire rated doors: Check with door manufacturer regarding the usage of additional required intumescent material.
Cover plates for doors without cladding are available upon request.
Square-corner cover plates are available upon request.
Kit includes two 3m (118.110") round cables.

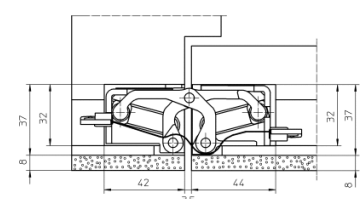
Product Features

Solid non magnetic stainless steel (304 series)
Multiple connection adapter options
Completely concealed hinge system
For wood, steel or aluminum door panels and frames
Easily adjustable in three dimensions (side +/- 3.0 mm (0.118"), height +/- 3.0 mm (0.118"), compression +/- 1.0 mm (0.039"))
Maintenance-free slide bearings

Functional Areas



front view



SIMONSWERK
TECTUS®

TE 626 3D A8 Energy

Manufactured of solid stainless steel with integrated and continuous energy transfer for flush high performance commercial doors with claddings up to 8 mm (0.315")

hinge	
fire resistance, smoke resistance, soundproof und forced entry resistance	commercial wood frames

Quality Marks



Combination

accessories	cover plate set TECTUS A8 radius
accessories	adapter 1 TECTUS Energy
accessories	universal adapter TECTUS Energy
accessories	round cable TECTUS Energy

Installation Tools

universal milling frame	
template 5 250659 5	24 mm router bit / 30 mm collar ring (step 1)
template 5 250688 5	24 mm router bit / 30 mm collar ring (step 3 (without cladding))
template 5 250689 5	24 mm router bit / 30 mm collar ring (step 2)
template 5 250690 5	24 mm router bit / 30 mm collar ring (step 3)
template 5 250939 5	flat line routing Energy

Items (DIN Reference: non-handed)

Finish(es)	satin stainless steel
packing unit	pack of 1
Item Number	5 400682 0 04001

While every due care has been taken, we cannot be held responsible for errors, omissions or defects. We kindly ask for your understanding.

© SIMONSWERK North America, Inc.