

SIMONSWERK
TECTUS®

**BRIDGEPORT
WORLDWIDE**

FOR A DEALER IN THE U.S.
CALL 1-800-362-1484

TE 526 3D Energy

made from solid stainless steel with continuous energy transfer for flush heavy-duty doors - with new snap-fitting connection

hinge

Technical details

load capacity	264 lbs
overall length	6.102 "
width (door)	1.024 "
width (frame)	1.024 "
cutter diameter	0.945 "
opening angle	180° degree
no. of wires	16 No. of wires
wire cross section	0.006 "
max. voltage: 50 V (voltage source acc. SELV-DIN EN 61140)	
max. current	0,8 A

descriptive text

SIMONSWERK TECTUS TE 526 3D Energy hinge manufactured of solid stainless steel (304 series) with integrated and continuous energy transfer. Completely concealed for flush doors with wood, steel or aluminum frames. With user-friendly 3-way adjustments, load capacity up to 120 kg (264 lbs), opening angle up to 180°, overall length 155 mm (6.102"), non-handed, maintenance-free slide bearings, three-dimensionally adjustable: side +/- 3,0 mm (0.118"), height +/- 3,0 mm (0.118"), compression +/- 1,0 mm (0.039"). Finish...

Note

The load capacity mentioned above refers to the use of 2 hinges per door leaf (height : width ratio 2:1).

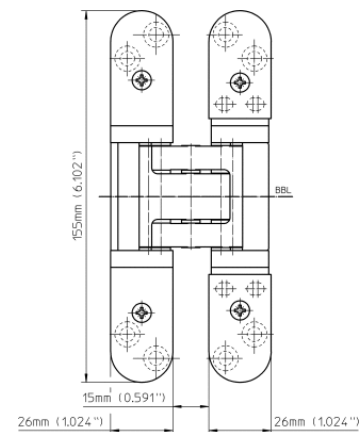
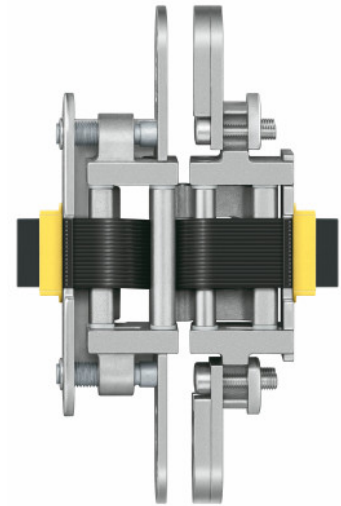
Application on steel frames is subject to special frame facings.
Please specify accessories when ordering.

Product features

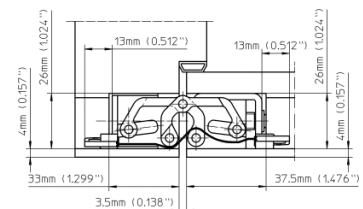
completely concealed hinge system
for wood, steel or aluminum frames
for flush commercial doors
maintenance-free slide bearings
easily 3D adjustable (side +/- 3.0 mm (0.118"), height +/- 3.0 mm (0.118"),
compression +/- 1.0 mm (0.039"))
with continuous energy transfer
individual connection adapter options

Functional areas

fire resistance, smoke resistance, soundproof und forced entry resistance



front view



commercial wood frames

SIMONSWERK

TECTUS®

TE 526 3D Energy

made from solid stainless steel with continuous energy transfer for flush heavy-duty doors - with new snap-fitting connection

hinge

Combination

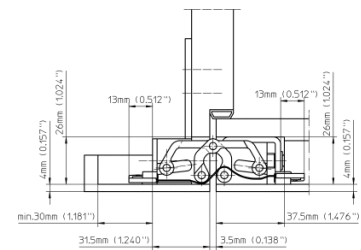
accessories	adapter 1 TECTUS Energy universal adapter TECTUS Energy round cable TECTUS Energy
receivers	TE 526/527 3D FZ/1 TE 526/527 3D SZ

installation tools

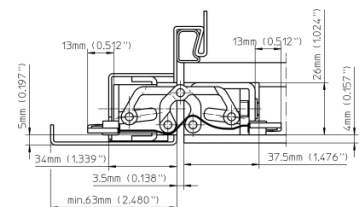
universal milling frame	
template 5 250939 5	flat line routing energy
template 5 250547 6	frame / door

Items (DIN reference: non-handed)

Finish(es)	satin stainless steel
packing unit	pack of 1
item number	5 400665 0 04001



casing wood frames



hollow metal frames